



INFORMATION SERVICES

Tutorial



Demonstration Customer

DynaMed
Powered by EBSCOhost

Search



Browse: [A](#) [B](#) [C](#) [D](#) [E](#) [F](#) [G](#) [H](#) [I](#) [J](#) [K](#) [L](#) [M](#) [N](#) [O](#) [P](#) [Q](#) [R](#) [S](#) [T](#) [U](#) [V](#) [W](#) [X](#) [Y](#) [Z](#)

[Browse Categories](#)

Spotlight

[Content/Editorial Policies](#)

[7-Step Evidence-based Methodology](#)

We are currently seeking reviewers for:

- [Dyspnea](#)
- [Nausea and vomiting in infants and children](#)

Learn more about the DynaMed Contribution Opportunities:

- [DynaMed Peer Review](#)
- [Editorial Policies for Reviewers](#)

Benvenuti al tutorial sulla ricerca di base in DynaMed, attraverso il quale avrete modo di conoscere le funzionalità di *DynaMed*, tra le quali la ricerca semplice, la navigazione per categorie, gli aggiornamenti più recenti e ottenere crediti relativi alla formazione medica continua attraverso le vostre ricerche (ove applicabile). In ogni momento potrete ritornare alla pagina iniziale di *DynaMed* cliccando sul link **Home** dalla barra di navigazione in alto a sinistra.

Home | Recent Updates | E-Newsletter | Mobile | Calculators ▾ | Send Comment | About ▾ | Help

DynaMed **coronary** Search

Powered by EBSCOhost Browse: A B C D E F G H I J K L M N O P Q R S T U V W X Y Z Browse Categories

Spotlight

Content/Editorial Policies

[7-Step Evidence-based Methodology](#)

We are currently seeking reviewers for:

- [Dyspnea](#)
- [Nausea and vomiting in infants and children](#)

Learn more about the DynaMed Contribution Opportunities:

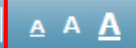
- [DynaMed Peer Review](#)
- [Editorial Policies for Reviewers](#)

Inizieremo conducendo una ricerca semplice per “coronary artery disease.” Scrivete la parola “coronary” nel campo di ricerca e cliccate sul bottone **Search**. Alternativamente potete scegliere di navigare i contenuti di *DynaMed*, cliccando sulla barra alfabetica sotto il campo di ricerca.

Home | Recent Updates | E-Newsletter | Mobile | Calculators ▾ | Send Comment | About ▾ | Help

DynaMed Powered by EBSCOhost ? Demonstration Customer

Browse: A B C D E F G H I J K L M N O P Q R S T U V W X Y Z | Browse Categories

1-50 of 756 | Page: 1 2 3 4 5 Next | 

Acute coronary syndrome	➤	Coronary artery disease (CAD) close ✕ <ul style="list-style-type: none">➤ Related Summaries➤ General Information (including ICD-9/-10 Codes)➤ Causes and Risk Factors➤ Complications and Associated Conditions➤ History➤ Physical➤ Diagnosis➤ Prognosis➤ Treatment➤ Prevention and Screening➤ Quality Improvement➤ References including Reviews and Guidelines➤ Patient Information➤ Acknowledgements
Percutaneous coronary intervention (PCI) for ST-elevation myocardial infarction (STEMI)	➤	
Coronary artery disease (CAD)	➤	
Myocardial infarction (MI)	➤	
Bone marrow stem cell treatment for myocardial infarction	➤	
ST-elevation myocardial infarction (STEMI)	➤	
Early revascularization for ST-elevation myocardial infarction	➤	
Acute myocardial infarction - Q-wave	➤	
Antiplatelet agents for ST-elevation myocardial infarction (STEMI)	➤	
American College of Cardiology and American Heart Association guidelines for management of patients with ST-elevation myocardial infarction (STEMI)	➤	
Anticoagulation in ST-elevation myocardial infarction (STEMI)	➤	
Beta blockers during acute ST-elevation myocardial infarction (STEMI)	➤	

Cliccate su **Coronary artery disease (CAD)** nella pagina dei risultati per accedere al topic, oppure andate semplicemente con il mouse sopra il titolo per visualizzare un anteprima dell'indice nella colonna di destra. Potete, ove disponibile, adattare il formato del testo cliccando sulle icone nell'angolo in alto a destra.

Home | Recent Updates | E-Newsletter | Mobile | Calculators v | Send Comment | About v | Help

DynaMed Search ? Demonstration Customer

Powered by EBSCOhost

Browse: A B C D E F G H I J K L M N O P Q R S T U V W X Y Z | Browse Categories

1-50 of 756 | Page: 1 2 3 4 5 Next

Acute coronary syndrome	>	Coronary artery disease (CAD) close x <input type="checkbox"/> Related Summaries <input checked="" type="checkbox"/> General Information (including ICD-9/-10 Codes) <ul style="list-style-type: none"><input type="checkbox"/> Description<input type="checkbox"/> Also called<input type="checkbox"/> ICD-9 codes<input type="checkbox"/> ICD-10 codes<input type="checkbox"/> Organs involved<input type="checkbox"/> Who is most affected<input type="checkbox"/> Incidence/Prevalence<input checked="" type="checkbox"/> Causes and Risk Factors<ul style="list-style-type: none"><input type="checkbox"/> Causes<input type="checkbox"/> Pathogenesis<input type="checkbox"/> Likely risk factors<input type="checkbox"/> Possible risk factors
Percutaneous coronary intervention (PCI) for ST-elevation myocardial infarction (STEMI)	>	
Coronary artery disease (CAD)	>	
Myocardial infarction (MI)	>	
Bone marrow stem cell treatment for myocardial infarction	>	
ST-elevation myocardial infarction (STEMI)	>	
Early revascularization for ST-elevation myocardial infarction	>	
Acute myocardial infarction - Q-wave	>	
Antiplatelet agents for ST-elevation myocardial infarction (STEMI)	>	
American College of Cardiology and American Heart Association guidelines for management of patients with ST-elevation myocardial infarction (STEMI)	>	
Anticoagulation in ST-elevation myocardial infarction (STEMI)	>	
Beta blockers during acute ST-elevation myocardial infarction (STEMI)	>	

Le sezioni possono essere ulteriormente espanse cliccando sull'icona + sulla sinistra di ciascuna. Oppure potete visualizzare ciascun topic dalla specifica sezione aperta, cliccandovi sopra direttamente.

Get CME for this Topic

Top

- Related Summaries
- General Information
- Causes and Risk Factors
- Complications and Associated Conditions
- History and Physical
- Diagnosis
- Treatment
- Prognosis
- Prevention and Screening
- Quality Improvement
- Guidelines and Resources
- Patient Information
- ICD-9/ICD-10 Codes
- References

Patient Education Reference Center
Search Other Services »

Result List 1 of 122 Expand All Collapse All Search Within Text

Coronary artery disease (CAD)

Updated 2012 Feb 21 08:26:00 AM: ACPM position statement on preventive practice for atherosclerotic cardiovascular disease screening in adults (National Guideline Clearinghouse 2012 Feb 20) [view update](#) | [Show more updates](#)

Related Summaries:

- Coronary artery disease (list of topics)
- Management of angina for evaluation and treatment of symptomatic CAD
- ST-elevation myocardial infarction (STEMI)
- Acute coronary syndrome
- Coronary revascularization overview
- Cardiovascular disease prevention overview
- Cardiovascular risk prediction

- General Information
- Causes and Risk Factors
- Complications and Associated Conditions
- History and Physical
- Diagnosis
- Treatment
- Prognosis
- Prevention and Screening
- Quality Improvement
- Guidelines and Resources

Tools

- Print
- Email

Visualizzato il topic potete accedere al link permanente, cliccando sull'icona corrispondente nella colonna di destra sullo schermo, di seguito all'icona relativa alla stampa e a quella dell'invio via email. Per visualizzare le singole sezioni d'interesse all'interno del record, cliccate direttamente sui paragrafi.

Selezioniamo **Treatment**.

← Result List 1 of 122 Expand All Collapse All Search Within Text

Coronary artery disease (CAD)

• **Updated 2012 Feb 21 08:26:00 AM:** ACPM position statement on preventive practice for atherosclerotic cardiovascular disease screening in adults (National Guideline Clearinghouse 2012 Feb 20) [view update](#) | [Show more updates](#)

Related Summaries:

- [Coronary artery disease \(list of topics\)](#)
- [Management of angina for evaluation and treatment of symptomatic CAD](#)
- [ST-elevation myocardial infarction \(STEMI\)](#)
- [Acute coronary syndrome](#)
- [Coronary revascularization overview](#)
- [Cardiovascular disease prevention overview](#)
- [Cardiovascular risk prediction](#)

▶ [General Information](#)

▶ [Causes and Risk Factors](#)

▶ [Complications and Associated Conditions](#)

▶ [History and Physical](#)

▶ [Diagnosis](#)

▼ [Treatment](#)

Treatment overview:

- [risk factor management](#)
 - [review with patients and families how to recognize symptoms of ST-segment elevation myocardial infarction \(ACC/AHA Class I, Level C\)](#)
 - [lifestyle changes associated with reduction in all-cause mortality in CAD patients include \[smoking cessation\]\(#\),](#)

Top

- ▶ [Related Summaries](#)
- ▶ [General Information](#)
- ▶ [Causes and Risk Factors](#)
- ▶ [Complications and Associated Conditions](#)
- ▶ [History and Physical](#)
- ▶ [Diagnosis](#)
- ▶ [Treatment](#)
- [Prognosis](#)
- ▶ [Prevention and Screening](#)
- ▶ [Quality Improvement](#)
- ▶ [Guidelines and Resources](#)
- [Patient Information](#)
- ▶ [ICD-9/ICD-10 Codes](#)
- ▶ [References](#)

Patient Education Reference Center

[Search Other Services »](#)

Tools

- 🔔
- 🖨️
- ✉️
- 🔒

Saranno visualizzate tutte le informazioni e le relative sottosezioni relativamente al trattamento. Per richiudere la sezione è sufficiente ricliccare su **Treatment**. Se autorizzati dal vostro amministratore, potete ricevere crediti relativi alla formazione continua medica per la ricerca condotta. Cliccate sul collegamento **Get CME for this Topic**, completate il modulo nella finestra che apparirà e successivamente confermate con **Submit**.

The screenshot shows a web page for 'Coronary artery disease (CAD)'. At the top, there is a navigation bar with 'Result List', '1 of 122', 'Expand All', 'Collapse All', and a search field labeled 'Search Within Text' with a magnifying glass icon. Below this is the main title 'Coronary artery disease (CAD)'. The left sidebar contains a 'Get CME for this Topic' button and a list of topics with expand/collapse icons. The main content area lists various topics like 'General Information', 'Causes and Risk Factors', etc., followed by a list of references. The right sidebar contains 'Tools' with icons for printing, email, and an alert bell icon. Two red circles highlight the 'Search Within Text' field and the alert bell icon.

Potete cercare un termine all'interno di un topic inserendolo nel campo **Search Within Text** in alto a destra e cliccando sull'icona della lente di ingrandimento. Tutte le occorrenze di quel termine nel topic saranno sottolineate in giallo. Potete anche creare un alert per essere avvisati quando il topic sarà aggiornato. Cliccate semplicemente sull'icona **Alert** nella colonna di destra. Selezionate la frequenza con la quale volete essere informati, aggiungete il vostro indirizzo e-mail e confermate cliccando su **Create Alert**.

Home | Recent Updates | E-Newsletter | Mobile | Calculators v | Send Comment | About v | Help

DynaMed Search Other Services »
 Search ?

Browse: A B C D E F G H I J K L M N O P Q R S T U V W X Y Z | Browse Categories

1-50 of 763 Page: 1 2 3 4 5 Next | A A A

Acute coronary syndrome	>
Percutaneous coronary intervention (PCI) for ST-elevation myocardial infarction (STEMI)	>
Bone marrow stem cell treatment for myocardial infarction	>
Myocardial infarction (MI)	>
Coronary artery disease (CAD)	>
ST-elevation myocardial infarction (STEMI)	>
Antiplatelet agents for ST-elevation myocardial infarction (STEMI)	>
Anticoagulation in ST-elevation myocardial infarction (STEMI)	>
Nitroglycerin for ST-elevation myocardial infarction (STEMI)	>
Eplerenone during acute ST-elevation myocardial infarction (STEMI)	>
Beta blockers during acute ST-elevation myocardial infarction (STEMI)	>
Insulin infusions for ST-elevation myocardial infarction (STEMI)	>

Patient Education Reference Center: (perc)

Coronary Artery Disease

Acute Coronary Syndrome

Coronary Artery Fistula - ...

Find More

Medline with Full Text: (mnh)

A prospective natural-his...

Thrombotic occlusion of a...

The relationship between ...

Find More

Cochrane Database of Systematic Reviews (chh)

Drug-eluting stents versu...

Preoperative intra aortic...

Se la vostra istituzione ha degli abbonamenti attivi ad altre basi dati mediche EBSCO a testo completo e queste sono state configurate nel profilo di *DynaMed*, potete avere accesso a risultati correlati frutto di ricerche lanciate in queste risorse. La lista dei risultati apparirà sulla colonna di destra della pagina di *DynaMed*. Per leggere un risultato proveniente da un'altra risorsa medica EBSCO cliccate sul suo titolo.

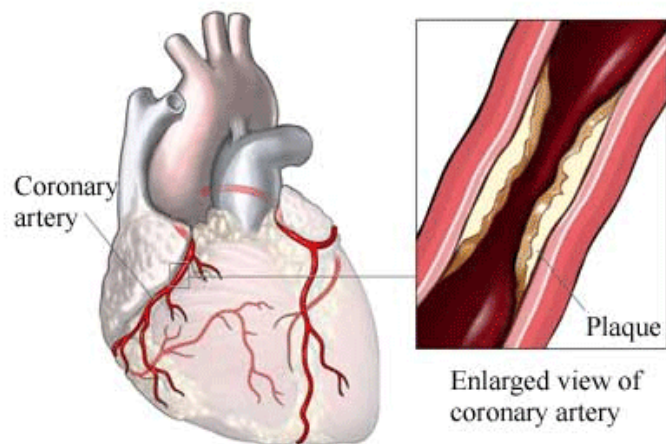
Coronary Artery Disease

(CAD; Coronary Atherosclerosis; Silent MI; Coronary Heart Disease; Ischemic Heart Disease; Atherosclerosis of the Coronary Arteries)

Coronary arteries bring oxygen rich blood to the heart muscle. Coronary artery disease (CAD) is blockage of these arteries. If the blockage is complete, areas of the heart muscle may be damaged. In severe case the heart muscle dies. This can lead to a heart attack, also known as a [myocardial infarction \(MI\)](#).

Coronary artery disease is the most common form of heart disease. It is the leading cause of death worldwide.

Coronary Artery Disease



© 2011 Nucleus Medical Media, Inc.

Tools

- 🔔
- 🖨️
- ✉️

Il risultato sarà aperto all'interno *DynaMed*. Cliccate **Result List** per ritornare indietro e navigare gli altri risultati.

Home **Recent Updates** E-Newsletter Mobile Calculators Send Comment About Help

DynaMed Search ?

Powered by EBSCOhost Browse: A B C D E F G H I J K L M N O P Q R S T U V W X Y Z Browse Categories

Spotlight

Content/Editorial Policies

[7-Step Evidence-based Methodology](#)

We are currently seeking reviewers for:


- [Dyspnea](#)
- [Nausea and vomiting in infants and children](#)

Learn more about the DynaMed Contribution Opportunities:

- [DynaMed Peer Review](#)
- [Editorial Policies for Reviewers](#)

I topics di *DynaMed* sono aggiornati quotidianamente. Per vedere gli aggiornamenti più recenti cliccate sul link **Recent Updates** in alto a sinistra nella barra di navigazione.



Home | Recent Updates | E-Newsletter | Mobile | Calculators v | Send Comment | About v | Help

DynaMed Search  Demonstration Customer

Browse: [A](#) [B](#) [C](#) [D](#) [E](#) [F](#) [G](#) [H](#) [I](#) [J](#) [K](#) [L](#) [M](#) [N](#) [O](#) [P](#) [Q](#) [R](#) [S](#) [T](#) [U](#) [V](#) [W](#) [X](#) [Y](#) [Z](#) [Browse Categories](#)

1-50 of 500 Page: [1](#) [2](#) [3](#) [4](#) [5](#) > Limit by Category: [All](#) Practice Changing Updates only [A](#) [A](#) [A](#)

Topic	Update Reason	Date
Diastolic heart failure	428.32 diastolic heart failure, chronic	05/10/2011 10:15:00 AM
Heart failure	428.2 systolic heart failure	05/06/2011 11:15:00 AM
Environmental control of asthma	Create UFO with "Create Update Link" check box selected but manually delete auto-generated anchor (short cita)	05/05/2011 03:15:00 PM
Risk factors for asthma	Create UFO with Create Update Link check box cleared (short cita)	05/05/2011 03:03:00 PM
Methylxanthines for asthma	Create UFO with Create Update Link check box checked (short cita)	05/05/2011 03:00:00 PM
New Delhi metallo-beta-lactamase (NDM-1)	350 cases of carbapenem-resistant K. pneumoniae (CRKP) isolated in Los Angeles County June-December 2010 (SHEA press release 2011 Mar 24)	04/02/2011 08:02:00 AM
Gabapentin	adverse effects with gabapentin include somnolence, dizziness, peripheral edema and ataxia (Cochrane Database Syst Rev 2011 Mar 16)	04/01/2011 09:52:00 PM

Tools  

Gli aggiornamenti sono visualizzati in ordine di data più recente. Ogni topic aggiornato presenta un'area con la motivazione, che ne indica la natura. Per accedere al topic cliccate sul link corrispondente sulla sinistra.

Home | Recent Updates | E-Newsletter | Mobile | Calculators v | Send Comment | About v | Help

DynaMed Search ? Demonstration Customer

Browse: [A](#) [B](#) [C](#) [D](#) [E](#) [F](#) [G](#) [H](#) [I](#) [J](#) [K](#) [L](#) [M](#) [N](#) [O](#) [P](#) [Q](#) [R](#) [S](#) [T](#) [U](#) [V](#) [W](#) [X](#) [Y](#) [Z](#) | [Browse Categories](#)

1-50 of 500 | Page: [1](#) [2](#) [3](#) [4](#) [5](#) > | Limit by Category: **All** | **Practice Changing Updates only** | A A A

Topic	Update Reason	Date
Diastolic heart failure	428.32 diastoli	05/10/2011 10:15:00 AM
Heart failure	428.2 systolic	05/06/2011 11:15:00 AM
Environmental control of asthma	Create UFO W cita)	05/05/2011 03:15:00 PM
Risk factors for asthma	Create UFO W	05/05/2011 03:03:00 PM
Methylxanthines for asthma	Create UFO W	05/05/2011 03:00:00 PM
New Delhi metallo-beta-lactamase (NDM-1)	350 cases of 2010 (SHEA p	04/02/2011 08:02:00 AM
Gabapentin	adverse effects with gabapentin include somnolence, dizziness, peripheral edema and ataxia (Cochrane Database Syst Rev 2011 Mar 16)	04/01/2011 09:52:00 PM

Gli aggiornamenti possono essere filtrati per area specialistica. Cliccate sul menu **Limit by Category** per filtrare e selezionare una specialità. Potete anche limitare gli aggiornamenti più recenti a quelli che sono stati indicati come cambiamento di pratica, selezionando la casella **Practice Changing Updates Only**. Gli aggiornamenti **Practice Changing** sono articoli integrati in *DynaMed* che possono condurre ad un cambiamento nei modelli della pratica o nelle decisioni mediche dei clinici.

Home | Recent Updates | E-Newsletter | Mobile | Calculators ▾ | Send Comment | About ▾ | Help

DynaMed Powered by EBSCOhost ? Demonstration Customer

Browse: [A](#) [B](#) [C](#) [D](#) [E](#) [F](#) [G](#) [H](#) [I](#) [J](#) [K](#) [L](#) [M](#) [N](#) [O](#) [P](#) [Q](#) [R](#) [S](#) [T](#) [U](#) [V](#) [W](#) [X](#) [Y](#) [Z](#) | [Browse Categories](#)

1-50 of 143 Page: [1](#) [2](#) [3](#) [Next](#)

Omeprazole	Omeprazole close ×
Celiac disease	<input type="checkbox"/> Warnings
Acute coronary syndrome	<input type="checkbox"/> General Information
Felbamate	<input type="checkbox"/> Uses and Efficacy
Aripiprazole	<input type="checkbox"/> Dosage and Administration
Olanzapine	<input type="checkbox"/> Cautions and Adverse Effects
Asthma in children	<input type="checkbox"/> Interactions
Gastric carcinoma	<input type="checkbox"/> Mechanism of Action/Pharmacokinetics
Parkinson disease	<input type="checkbox"/> Stability and Compatibility
ST-elevation myocardial infarction (STEMI)	<input type="checkbox"/> Preparations
Japanese titles	<input type="checkbox"/> Patient Information
Helicobacter pylori infection	<input type="checkbox"/> References
	<input type="checkbox"/> Acknowledgements

DynaMed include più di 1.000 topics riguardanti farmaci. A fini dimostrativi, inseriremo nel campo di ricerca *Omeprazole*, cliccando successivamente su **Search**. Dalla lista dei risultati, cliccheremo su **Omeprazole** per accedere al relativo topic di *DynaMed*. Come in precedenza, potete sempre andare con il mouse sulla parola per avere un'anteprima dell'indice del topic sulla colonna di destra.

Get CME for this Topic

Top

- + Warnings
- + General Information
- + Uses and Efficacy
- + Dosage and Administration
- + Cautions and Adverse Effects
- + Interactions
- + Mechanism of Action/Pharmacokinetics
- + Stability and Compatibility
- + Preparations
- + Patient Information
- + References
- Acknowledgements

Patient Education Reference Center

Search Other Services »

Result List 1 of 151

[Expand All](#) | [Collapse All](#) | A A A Search Within Text

Omeprazole

Updated 2011 Jun 28 12:16:00 PM: long-term proton pump inhibitor (PPI) use associated with increased risk for fracture (Ann Fam Med 2011 May-Jun) [view update](#) | [Show more updates](#)

[Warnings](#)

Notifications:

Special Alerts:

[Posted 05/25/2010] FDA notified healthcare professionals and patients of revisions to the prescription and over-the-counter [OTC] labels for proton pump inhibitors, which work by reducing the amount of acid in the stomach, to include new safety information about a possible increased risk of fractures of the hip, wrist, and spine with the use of these medications.

The new safety information is based on FDA's review of several epidemiological studies that found those at greatest risk for these fractures received high doses of proton pump inhibitors or used them for one year or more. The majority of the studies evaluated individuals 50 years of age or older and the increased risk of fracture primarily was observed in this age group. While the greatest increased risk for fractures in these studies involved people who had been taking prescription proton pump inhibitors for at least one year or who had been taking high doses of the prescription medications (not available over-the-counter), as a precaution, the "Drug Facts" label on the OTC proton pump inhibitors (indicated for 14 days of continuous use) also is being revised to include information about this risk. FDA recommends healthcare professionals, when prescribing proton pump inhibitors, should consider whether a lower dose or shorter duration of therapy would adequately treat the patient's condition.

The safety communication includes a data summary with a table and references which support the epidemiological studies reviewed for this communication. For more information visit the FDA website at: [\[Web\]](#) and [\[Web\]](#).

[General Information](#)

Tools

- Alerts
- Print
- Mail
- Link

Per espandere una qualsiasi sezione del topic cliccate sul titolo corrispondente. Potete anche espandere o richiudere tutte le sezioni contemporaneamente cliccando i link **Expand All** e **Collapse All** in alto rispetto al topic. Se è presente un avvertimento per un topic farmacologico, questo sarà automaticamente visualizzato in modo esteso all'apertura dell'argomento.

Home | Recent Updates | E-Newsletter | Mobile | Calculators ▾

Send Comment | About ▾ | Help

DynaMed Powered by EBSCOhost

Search ?

Demonstration Customer

Browse: A B C D E F G H I J K L M N O P Q R S T U V W X Y Z **Browse Categories**

Browse by Category:

- + A parent with 2 children topic to parent
- + **Cardiovascular Disorders**
- + Complementary and Alternative Therapies
- + Contraception
- + Critical Care
- + Dermatologic Disorders
- + Diagnostic Testing
- + Differential Diagnosis
- + Drugs
- + DS parent category with 2 children and topic attached to lowest level
- + Ear, Nose and Throat Disorders (Otorhinolaryngology)
- + Emergency Medicine
- + Endocrine and Metabolic Disorders
- + Gastrointestinal Disorders
- + Genetic Disorders
- + Geriatrics

Potete anche percorrere i topics di *DynaMed* per categoria. Cliccate sul collegamento **Browse Categories** per vedere le categorie disponibili in *DynaMed*. Cliccate sulla categoria di interesse per visualizzare i topics disponibili.

Home | Recent Updates | E-Newsletter | Mobile | Calculators ▾ Send Comment | About ▾ | Help

DynaMed Powered by EBSCOhost ? Demonstration Customer

Browse: [A](#) [B](#) [C](#) [D](#) [E](#) [F](#) [G](#) [H](#) [I](#) [J](#) [K](#) [L](#) [M](#) [N](#) [O](#) [P](#) [Q](#) [R](#) [S](#) [T](#) [U](#) [V](#) [W](#) [X](#) [Y](#) [Z](#)

Browse by Category: 🔍 | ⏏ | 🔍 | 🔍 | 🔍

- A parent with 2 children topic to parent
- Cardiovascular Disorders**
 - Cardiovascular disease prevention
 - Cardiovascular medications
 - Disorders of lipid metabolism
 - Heart
 - Renovascular disorders
 - Revascularization procedures
 - Syncope
 - Vascular Operation
- Complementary and Alternative Therapies
- Contraception
- Critical Care
- Dermatologic Disorders
- Diagnostic Testing
- Differential Diagnosis
- Drugs

Una volta visualizzati i topics di una categoria, potete espanderli giungendo alle sottocategorie cliccando semplicemente sull' icona +.

Home | Recent Updates | E-Newsletter | Mobile | Calculators ▾ | Send Comment | About ▾ | Help

DynaMed Powered by EBSCOhost ?

Browse: A B C D E F G H I J K L M N O P Q R S T U V W X Y Z | Browse Categories

Spotlight

[Content/Editorial Policies](#)

[7-Step Evidence-based Methodology](#)





We are currently seeking reviewers for:

- [Dyspnea](#)
- [Nausea and vomiting in infants and children](#)

Learn more about the DynaMed Contribution Opportunities:

- [DynaMed Peer Review](#)
- [Editorial Policies for Reviewers](#)

Search Other Services

	National Guideline Clearinghouse		PubMed
	DynaMed Weekly Update		Point-of-Care products website

Se il vostro amministratore ha attivato nell'account la funzionalità **Search Other Services**, potete accedere direttamente ad altre risorse o siti web cliccando sulle icone corrispondenti nella homepage di *DynaMed*.

Home | Recent Updates | E-Newsletter | Mobile | Calculators | Send Comment | About | **Help**

EBSCO Help - Windows Internet Explorer
http://support.ebsco.com/help/index.php?help_id=5710

DynaMed Powered by EBSCO

Print | Close

Enter keyword
All words
Search

DynaMed Home Page

The *DynaMed* Home Page provides search and browse options to locate topics, and offers a menu on the top of the page that provides access to standard *DynaMed* topics and information.

Home | Recent Updates | E-Newsletter | Mobile | Calculators | Send Comment | About | Help

DynaMed Powered by EBSCO

Browse: ABCDEFGHIJKLMNOPQRSTUVWXYZ | Browse Categories

Spotlight

- Content/Editorial Policies
- 7-Step Evidence-based Methodology
- We are currently seeking reviewers for:
 - Dyspnea
 - Nausea and vomiting in infants and children
- Learn more about the DynaMed Contribution Opportunities:
 - DynaMed Peer Review
 - Editorial Policies for Reviewers

PubMed

Point-of-Care products website

Note: To quickly access the DynaMed Home Page from any location in DynaMed, click the Home link

In ogni momento, durante la vostra sessione, cliccate su **Help** per consultare la guida completa dedicata a *DynaMed*.



For more information, visit the EBSCO Support Site
<http://support.ebsco.com>